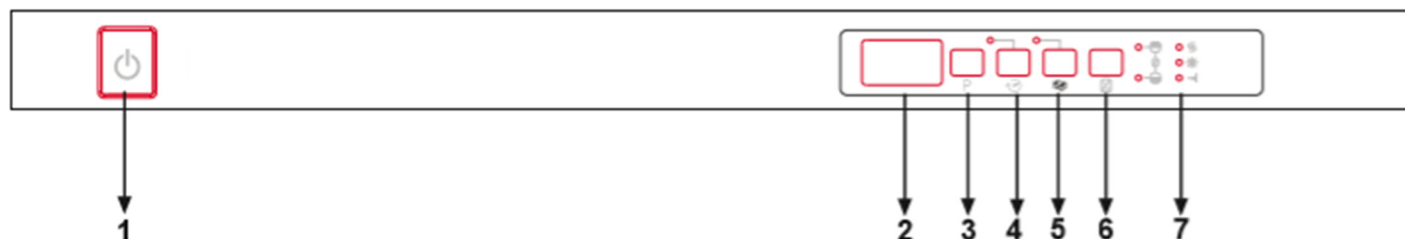


# DISHWASHER

## GETTING FAMILIAR WITH YOUR MACHINE



### 1.) Power On/Off Button

When the Power On/Off button is pressed, end of program indicator starts lighting.

### 2.) Program Display

Program display indicates the times of the programs and the remaining time during the program flow. You can also follow-up the selected programs by this display.

### 3.) Program selection button

With the program selector button, you can select a suitable program for your dishes.

### 4.) Delay Timer Button

You can delay the start time of a selected program for 1-2 ... 19 hours by pressing the delay timer button of your machine. When you press the delay timer button, delay "1h" appears on the program display. If you continue pressing the delay timer button, 1-2... 19 will be displayed respectively. You can activate the delayed start by selecting the delay time and the desired washing program with the *program selection* button. It is also possible to select the program first and the delayed start afterwards. If you want to change or cancel the delayed start time, you can adjust it with the delay timer button; it will be activated according to the last value entered.

### 5.) Tablet Detergent Button (3 in 1 button)

Press tablet detergent button when you use combined detergents that include salt and rinse aid.

### 6.) 1/2 Half Load Button

Using the function 1/2, three sorts of washing up can be done those being lower basket, upper basket and both baskets.



If you have little amount of dishes in your machine and if you have to wash them, you can also activate the semi-filling function in some of the programs additionally. If you have dishes in both baskets, press the key 1/2 and select the position in which both lamps are highlighted.



If you have dishes only in the upper basket, press the key 1/2 and select the position in which the upper lamp is illuminated. Thus, washing up shall be done only on the upper basket of your machine. No dishes should certainly be available in the lower basket while using this feature.



If you have dishes only in the lower basket, press the key 1/2 and select the position in which the lower lamp is illuminated. Thus, washing up shall be done only on the lower basket of your machine. In using this feature, make sure that there are no dishes in the upper basket.

**Note :** If you have used an extra feature on the latest washing program, this feature will remain active also on the next washing program. If you do not want to use this feature on the newly selected washing program, press the selected feature button again, and check that the lamp on the button goes off.

**Note:** When you select an incompatible program with the half load button, a buzzer sound is heard which indicates that the selected option is not compatible.

### 7.) Salt Lack Warning Indicator

In order to see whether softening salt in your machine is sufficient or not, check salt lack warning light on the display. When salt light warning light starts coming on, you need to fill in the salt chamber.

#### Rinse aid Lack Warning Indicator

In order to check that there is sufficient rinse aid in your machine check rinse aid lack warning light on the display. When rinse aid warning light starts coming on, fill in rinse aid chamber.

### End of Program Indicator

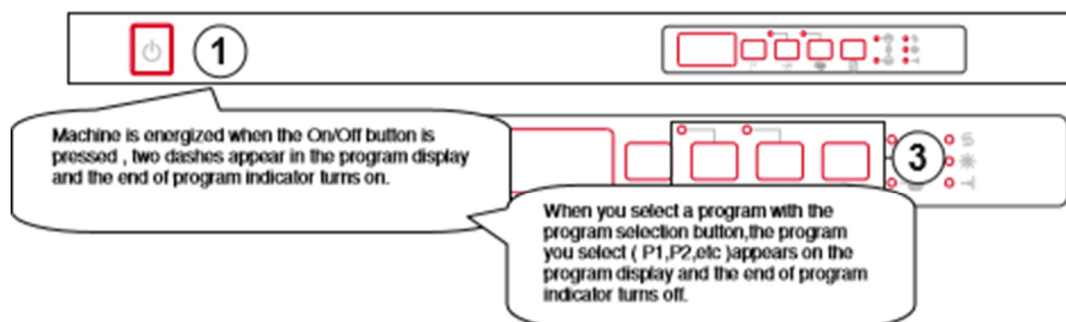
End of program indicator on the control panel turns on when the selected washing program is completed. Your machine also gives a buzzer sound for "5 times" when the program is completed.

**Notice! Before using the dishwasher, please make sure the tap for the dishwasher has been set as open.  
After programme is finished, please close the tap.**



## SWITCHING ON THE MACHINE AND SELECTING A PROGRAMME

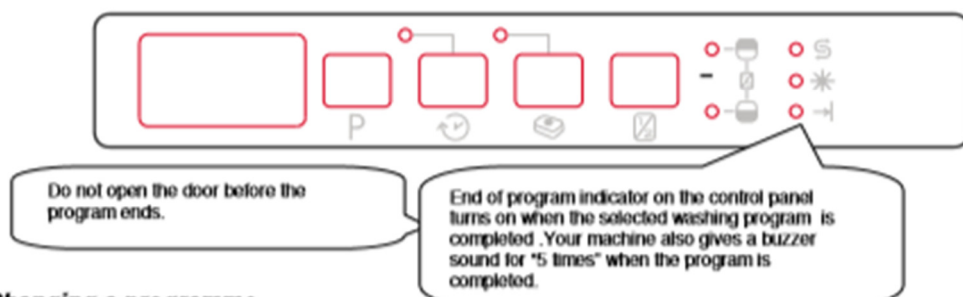
### Switching on the machine



- 1 Press the Power On/Off key.
- 2 Select the program suiting your dishes via the Program Selection button.
- 3 If you prefer or wish to prefer, you can choose additional function.
- 4 Close door. The program starts automatically.

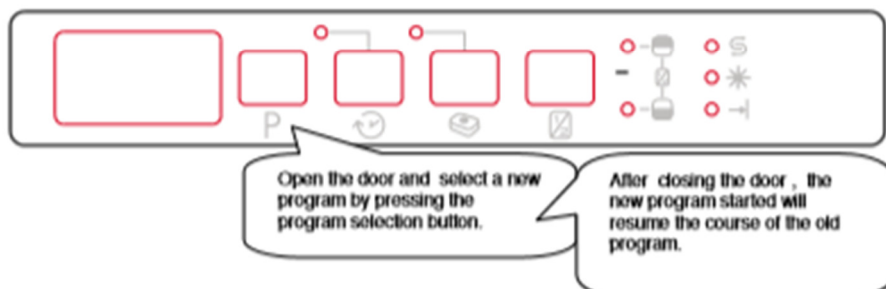
**Note:** If you decide not to start the machine after selecting the program, just press the on/off button. Your machine will become ready for the new program selection when you press on/off button again. You can select the new program by pressing the program selection button.

### Program follow-up



### Changing a programme

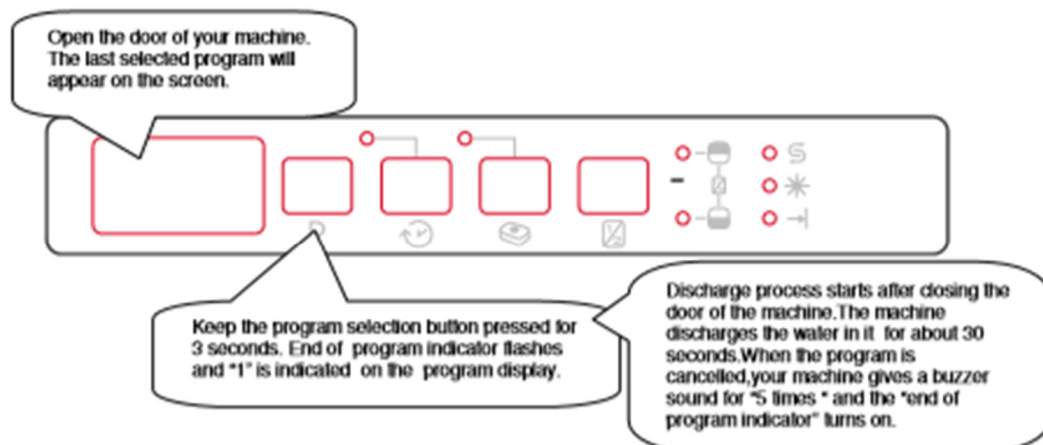
If you would like to change programs while a washing program is continuing.



**Note:** When the door of the machine is opened in order to stop the washing program before it is completed first open the door slightly in order to avoid water spillage.

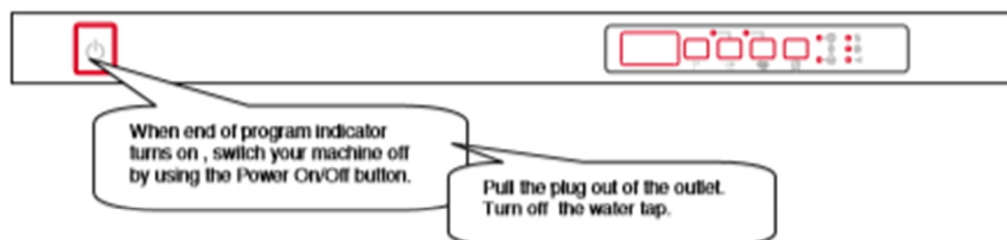
### Changing a programme with resetting

If you would like to cancel a program while a washing program is resumed



**Note:** When the door of the machine is opened in order to stop the washing program before it is completed first open the door slightly in order to avoid water spillage.

### Switching the machine off



**Note:** After the buzzer sound which indicates the end of the program when the washing program comes to an end (end indicator light is on), you can leave the door of your machine ajar in order to hasten the drying.

**Note:** If the machine door opens during washing or the power is cut off, the machine will go on to the program in case the door is shut or the power is back.

**Note:** If energy is cut or machine door is opened during drying process, program is terminated. Your machine becomes ready for new program selection.

# PROGRAMME DESCRIPTIONS

## Programme items

Programme No	Auto Intensive	Auto Normal	Auto Delicate	Extra Hygiene	Super 50' 65°C	Eco (reference)	Quick	Prewash
Programme names and temperatures	60-70°C (P1)	50-60°C (P2)	30-50°C (P3)	70°C (P4)	65°C (P5)	50°C (P6)	40°C (P7)	- (P8)
Type of food waste	Automatically adjust the washing time with temperature and amount of water by determining the soil level of dishes			Dishes with dense dirt waiting for a long time or requiring hygienic washing	Soups, sauces, pasta, eggs, pilaf, potato and oven dishes, fried foods	Coffee, milk, tea, cold meats, vegetables, not kept for long	Coffee, milk, tea, cold meats, vegetables, not kept for long	Pre-wash to rinse and loosen residue awaiting full load then select a programme
Level of soil	high	high	small	high	medium	medium	small	
Detergent amount B: 25 cm³ / 15 cm³ A: 5 cm³	A+B	A+B	B	A+B	A+B	A+B	B	
<div> <div>Automatically adjust the washing time with temperature and amount of water by determining the soil level of dishes</div> <div> <div>50°C Wash</div> <div>70°C Wash</div> <div>Cold Rinse</div> <div>Hot rinse</div> <div>End</div> <div>Dry</div> <div>End</div> </div> <div> <div>65°C Wash</div> <div>Cold Rinse</div> <div>Hot rinse</div> <div>End</div> </div> <div> <div>50°C Wash</div> <div>50°C Wash</div> <div>Cold Rinse</div> <div>Hot rinse</div> <div>Hot rinse</div> <div>End</div> <div>Dry</div> <div>End</div> </div> <div> <div>40°C Wash</div> <div>Cold Rinse</div> <div>Hot rinse</div> <div>End</div> </div> </div>								
								Prewash

Programme duration (min.)	152-98	111-96	82-69	115	50	198	30	15
Electricity consumption (kW hours)	0,93-1,42	0,81-1,02	0,66-0,77	1,22	1,02	0,73	0,55	0,02
Water consumption (liters)	10,0-20	9,6-16,1	9,7-16	12,8	9,9	12	9,9	3,6

**Warning :** Short programs do not include a drying step.

The values declared above are the values obtained under laboratory conditions according to relevant standards. These values can change depending on conditions of product's use and environment (network tension, water pressure, water input temperature and environment temperature).

## FAILURE CODES AND WHAT TO DO IN CASE OF FAILURE

ERROR CODE	ERROR DESCRIPTION	CONTROL
F5	Inadequate water supply	<ul style="list-style-type: none"><li>• Make sure the water input tap is totally open and that there is no water cut.</li><li>• Close the water input tap, separate the water input hose from the tap and clean the filter at the connection end of the hose.</li><li>• Restart your machine, contact GRAM service if the error resumes.</li></ul>
F3	Error of continuous water input	<ul style="list-style-type: none"><li>• Close the tap.</li><li>• Contact GRAM service.</li></ul>
F2	The waste water in the machine cannot be discharged.	<ul style="list-style-type: none"><li>• Water discharge hose is clogged.</li><li>• The filters of your machine might be clogged.</li><li>• Power off-on your machine and activate the program cancellation command.</li><li>• If the error continues, contact GRAM service.</li></ul>
F8	Heater error	Contact GRAM service.
F1	Alarm is active against water overflow	<ul style="list-style-type: none"><li>• Power off your machine and close the tap.</li><li>• Contact Gram service.</li></ul>
FE	Faulty electronic card	Contact GRAM service.
F7	Overheating error (temperature in the machine is too high)	Contact GRAM service.
F9	Divisor position error	Contact GRAM service.
F6	Faulty heater sensor	Contact GRAM service.



***If detergent residues are left in the detergent compartment***

Detergent has been added when the detergent compartment was wet.

***If water is left inside the machine at the end of the programme***

- The water drain hose is clogged or twisted.
- The filters are clogged.
- The programme is not finished yet.

***If the machine stops during a wash operation***

- Power failure.
- Water inlet failure.
- Program can be on standby mode.

***If shaking and hitting noises are heard during a wash operation***

- Dishes placed incorrectly.
- Spray arm hitting the dishes.

***If there are partial food wastes left on the dishes***

- Dishes placed incorrectly into the machine, sprayed water did not reach related places.
- Basket overly loaded.
- Dishes leaning against one another.
- Very small amount of detergent added.
- An unsuitable, rather weak wash programme selected.
- Spray arm clogged with food wastes.
- Filters clogged.
- Filters incorrectly fitted.
- Water drain pump clogged.

***If there are whitish stains on the dishes***

- A very small amount of detergent is being used.
- Rinse aid dosage setting at a very low level.
- No special salt is being used despite the high degree of water hardness.
- Water softener system setting is at a very low level.
- Salt compartment cap not closed well.
- A detergent without phosphate used; try one that contains phosphate.

***If the dishes won't dry up***

- A programme without a dry operation selected.
- Rinse aid dosage set too low
- Dishes unloaded too fast.

***If there are rust stains on the dishes***

- Stainless-steel quality of the dishes washed is insufficient.
- High rate of salt in the wash water.
- Salt compartment cap not closed well.
- Too much salt spilt into the sides and into the machine while filling it with salt.
- Unhealthy mains grounding.

***Door is not opened / closed properly ;***

- Not proper weight wooden part inserted on the door. ( Follow the weight given in the Assembly manuel )
- The tensile of the door spring not adjusted properly. Adjust it according to the Assembly manuel.