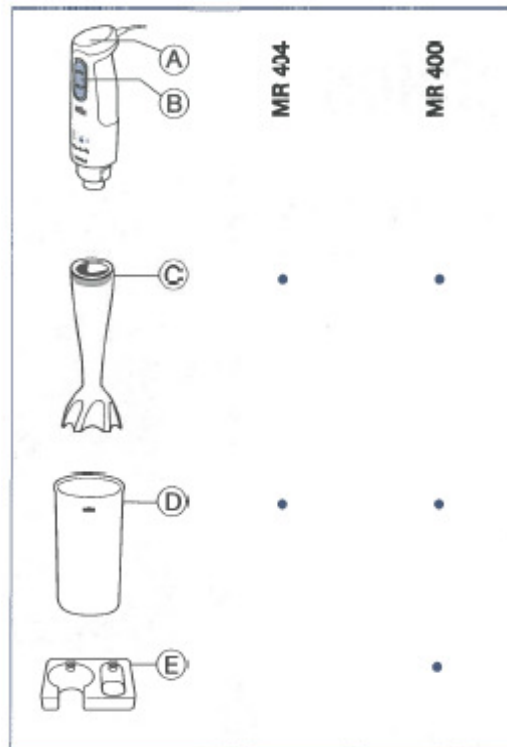
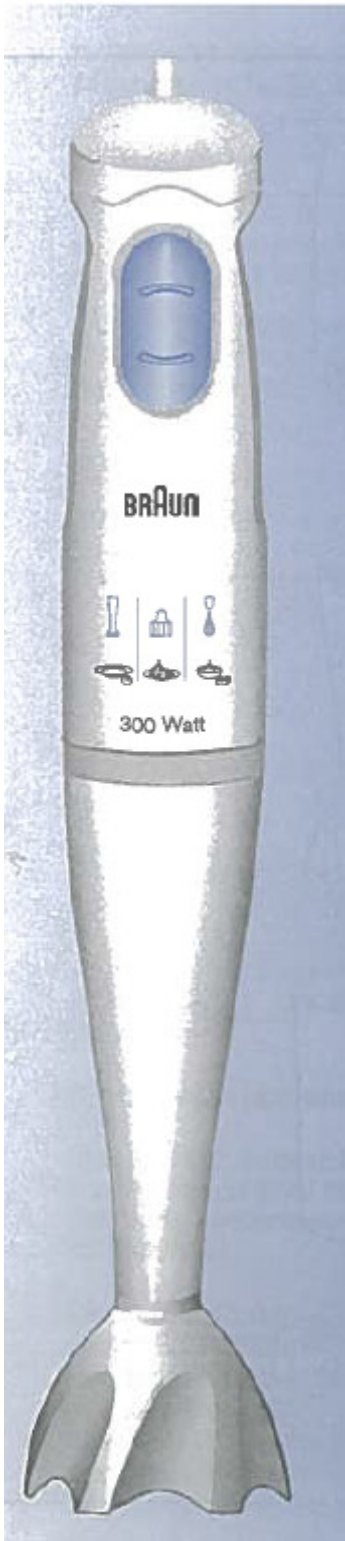
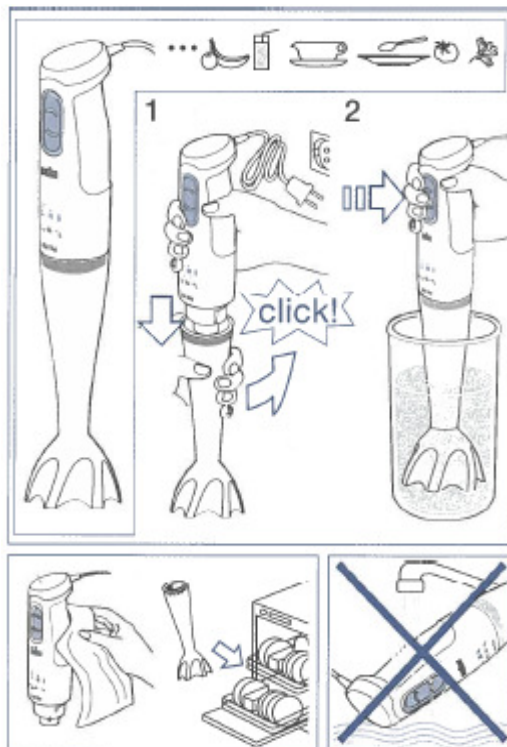


BLENDER



Description:

- A. Motor part
- B. On/Off switch
- C. Shaft with blade
- D. Mixing beaker
- E. Wall mount



1. Insert the motor part (A) into the shaft with blade (C) and turn until it locks.

2. To avoid splashing, insert the hand blender into the vessel first, only then press switch (B).

3. You can operate the hand blender in the mixing beaker (D) and just as well in any other vessel. When blending directly in the saucepan while cooking, take the pan from the stove first.

Clean the motor part (A) with a damp cloth only. All other parts can be cleaned in the dishwasher.